

Sunrise Peak
5,814

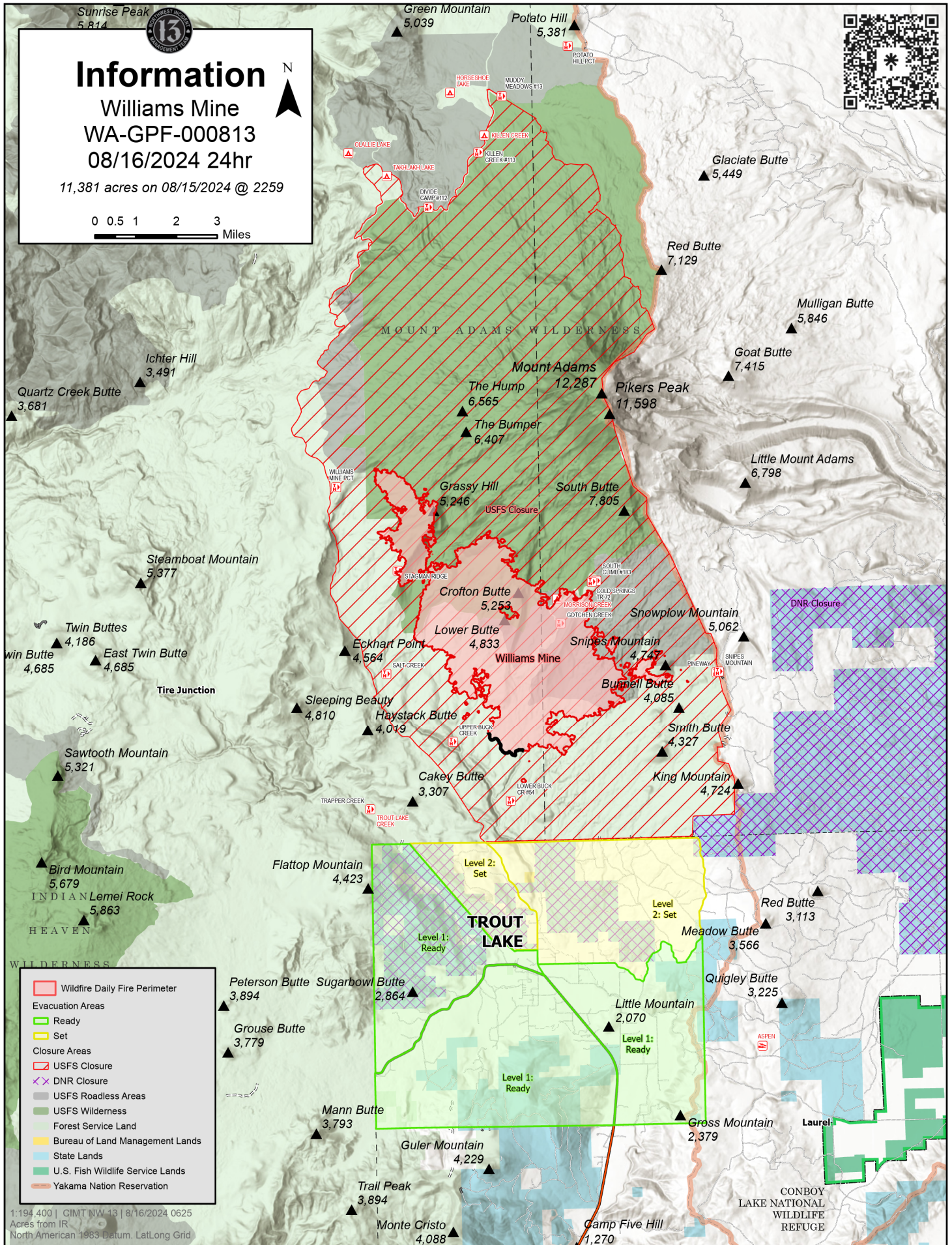


Information

Williams Mine
WA-GPF-000813
08/16/2024 24hr

11,381 acres on 08/15/2024 @ 2259

0 0.5 1 2 3 Miles



- Wildfire Daily Fire Perimeter
- Evacuation Areas
 - Ready
 - Set
- Closure Areas
 - USFS Closure
 - DNR Closure
 - USFS Roadless Areas
 - USFS Wilderness
 - Forest Service Land
 - Bureau of Land Management Lands
 - State Lands
 - U.S. Fish Wildlife Service Lands
 - Yakama Nation Reservation

1:194,400 | GIMT NW 13 | 8/16/2024 0625
Acres from IR
North American 1983 Datum, Lat,Long Grid